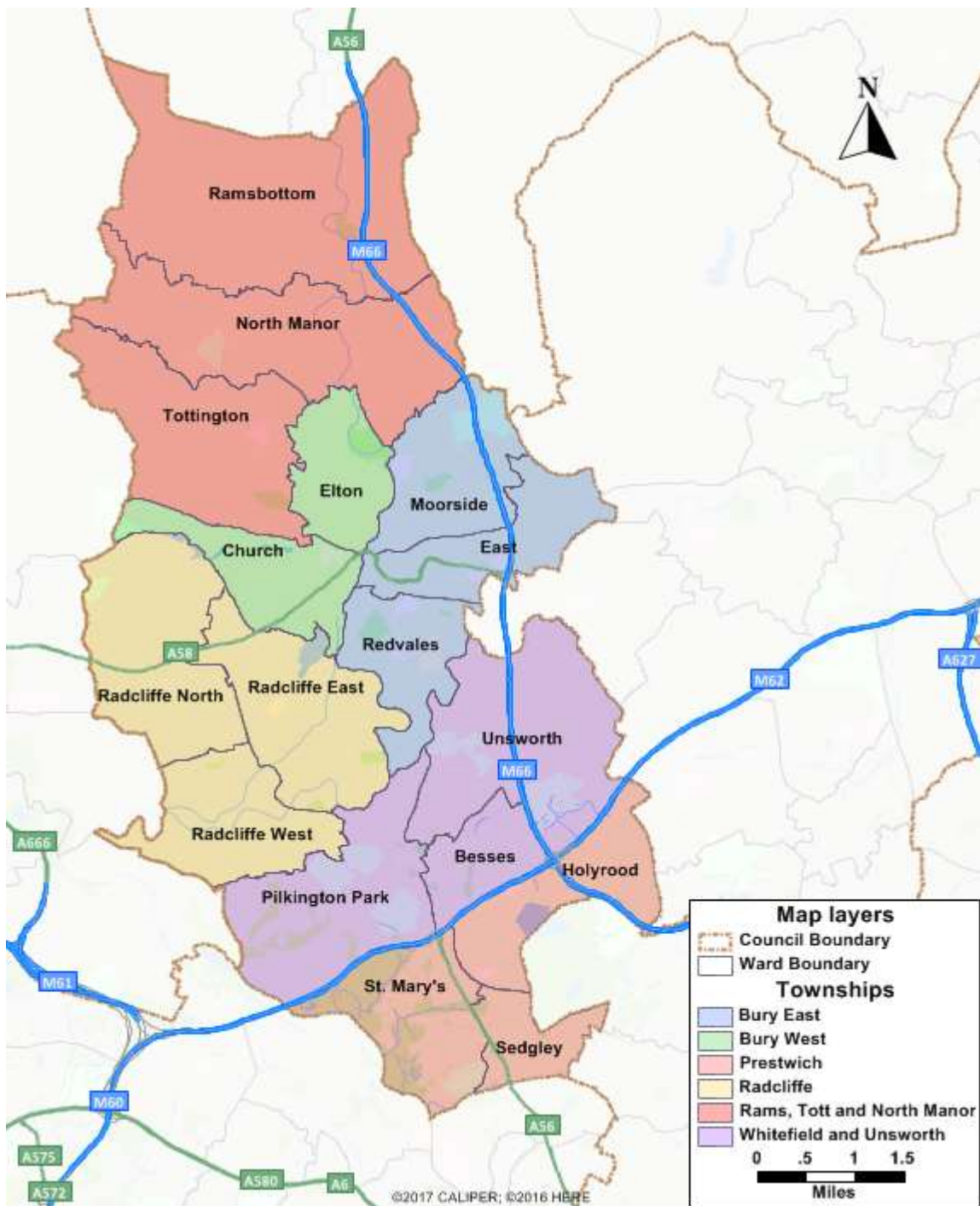


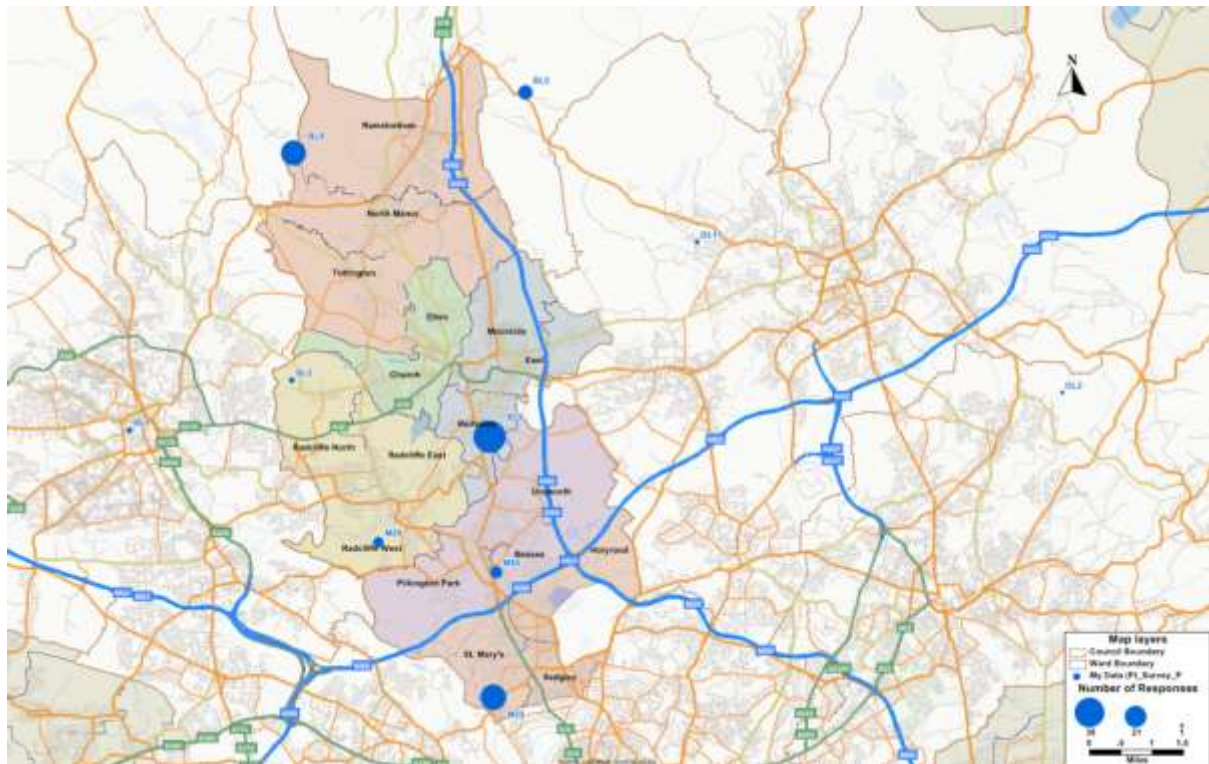
# **Appendix Ten**

## **Pharmaceutical Needs Assessment Maps**

Map 1 - Bury Townships

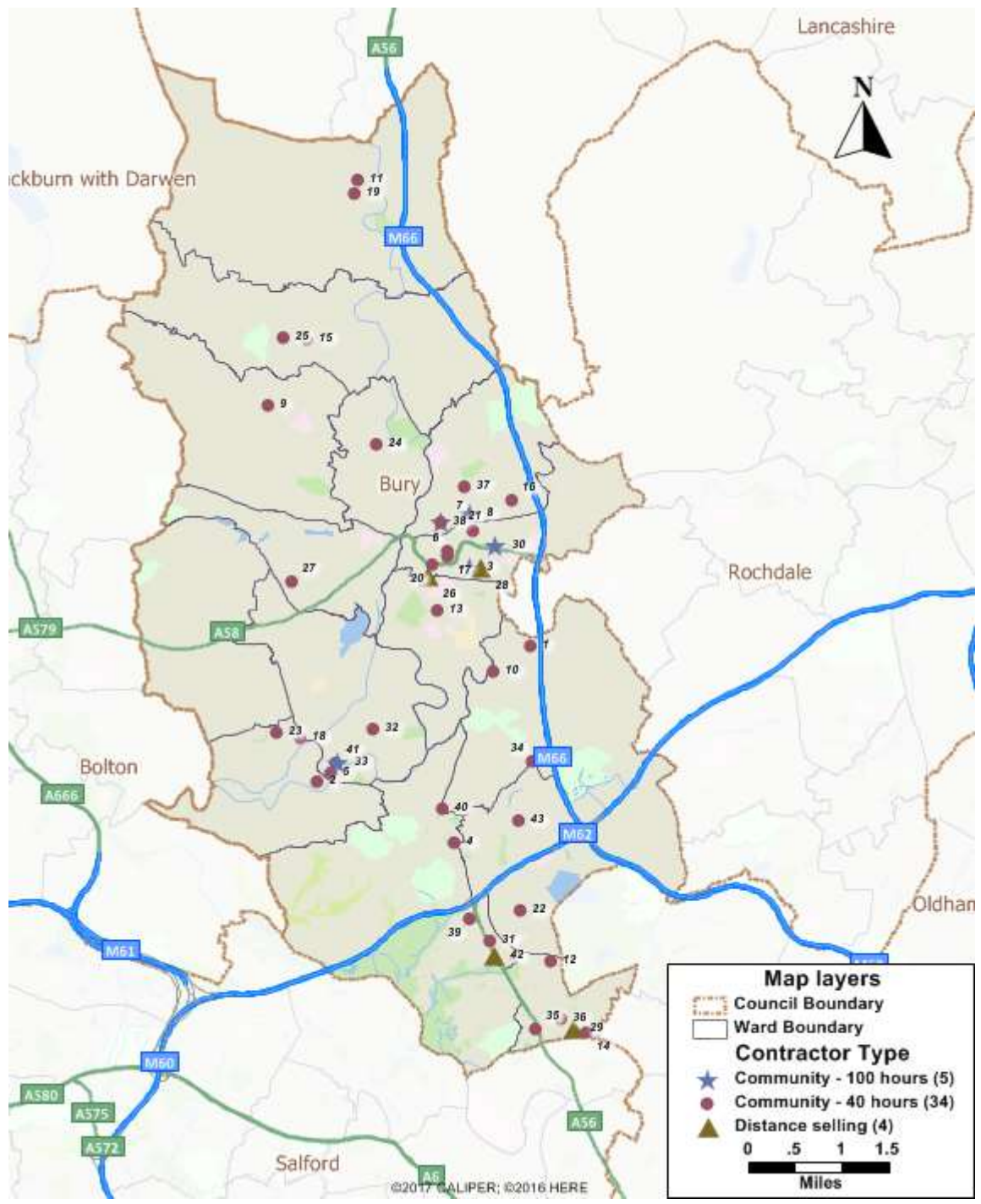


## Map 2 - Public survey responses by Post Code District



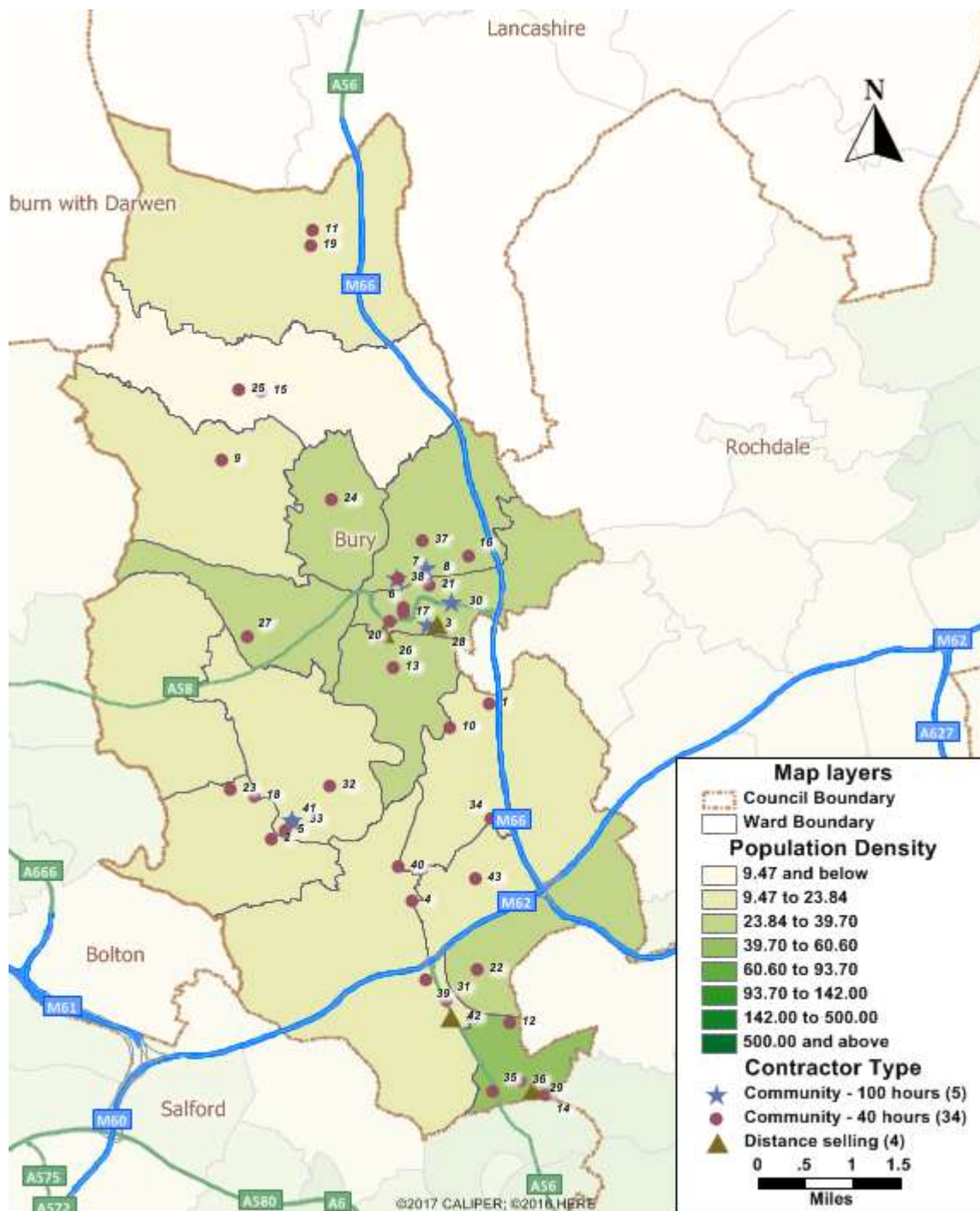
There was also one response each from BB4 and M21, which are not shown on the map. BLO also includes part of Ramsbottom ward but has its centre outside Bury's boundary; it is likely that the 13 people responding from BLO lived in the Ramsbottom ward.

Map 3 - Bury Pharmacies by type

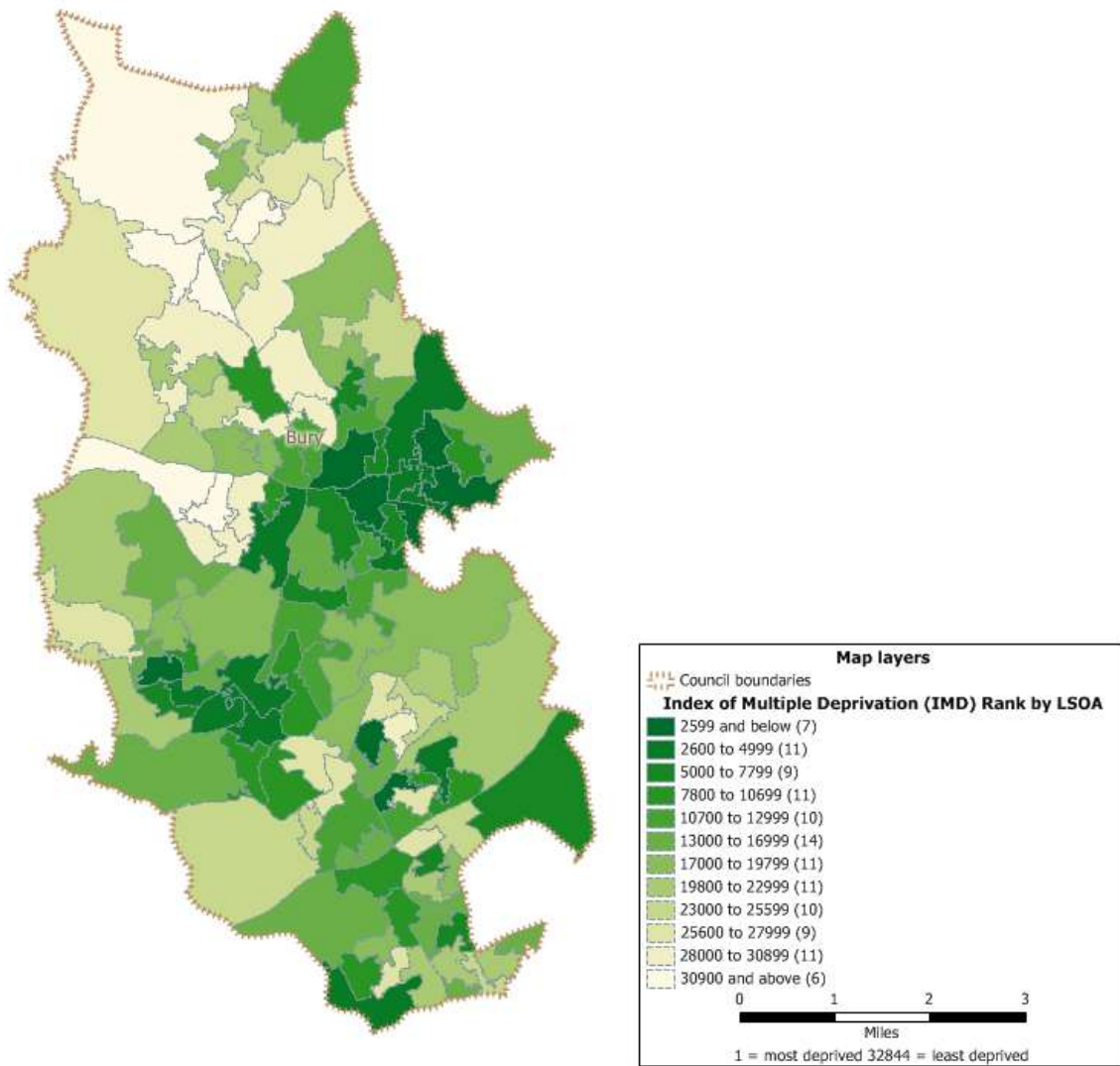




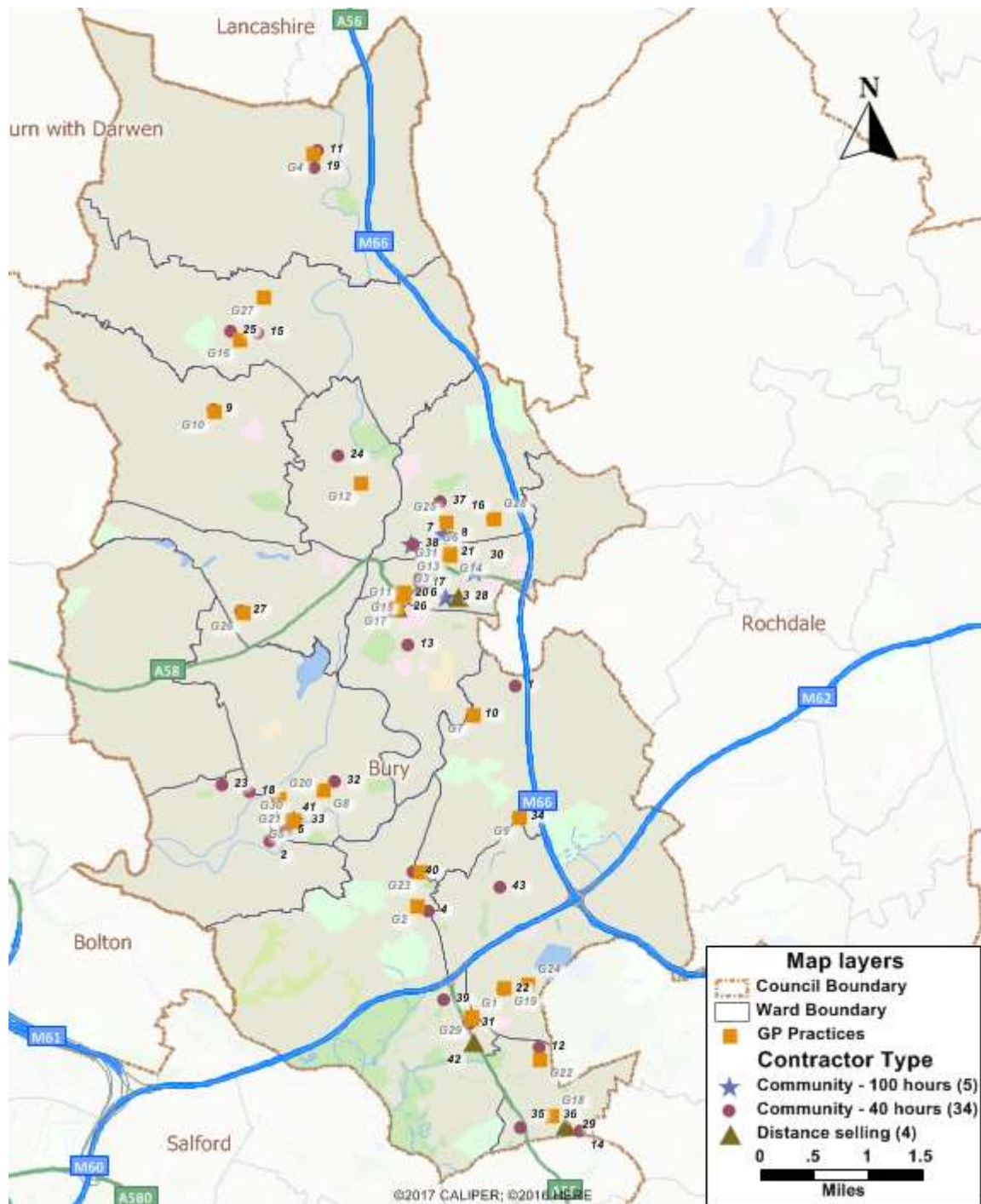
Map 4 - Population density



Map 5 - IMD 2015 by LSOA

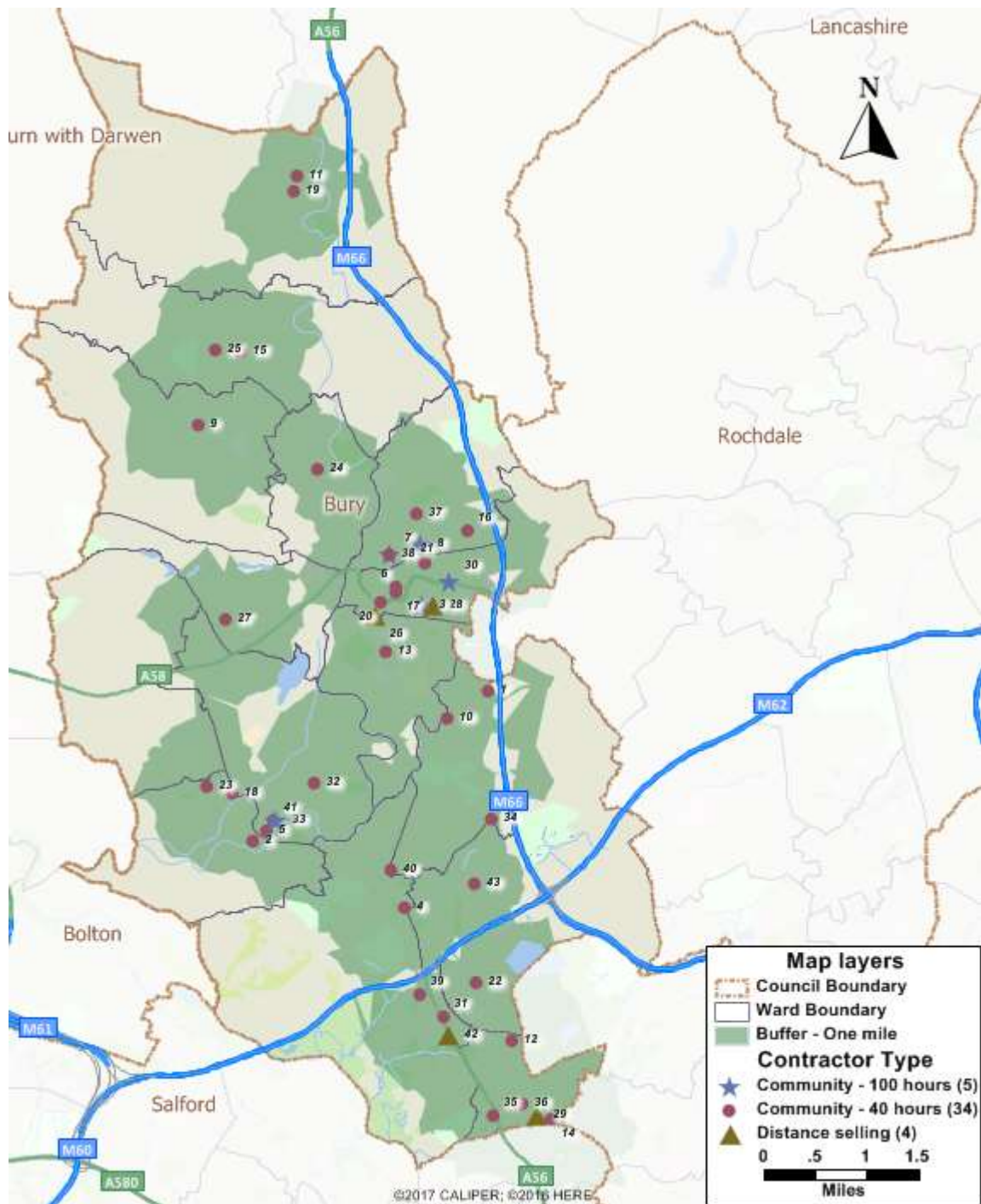


Map 6 - Location of Pharmacies & GP practices in Bury



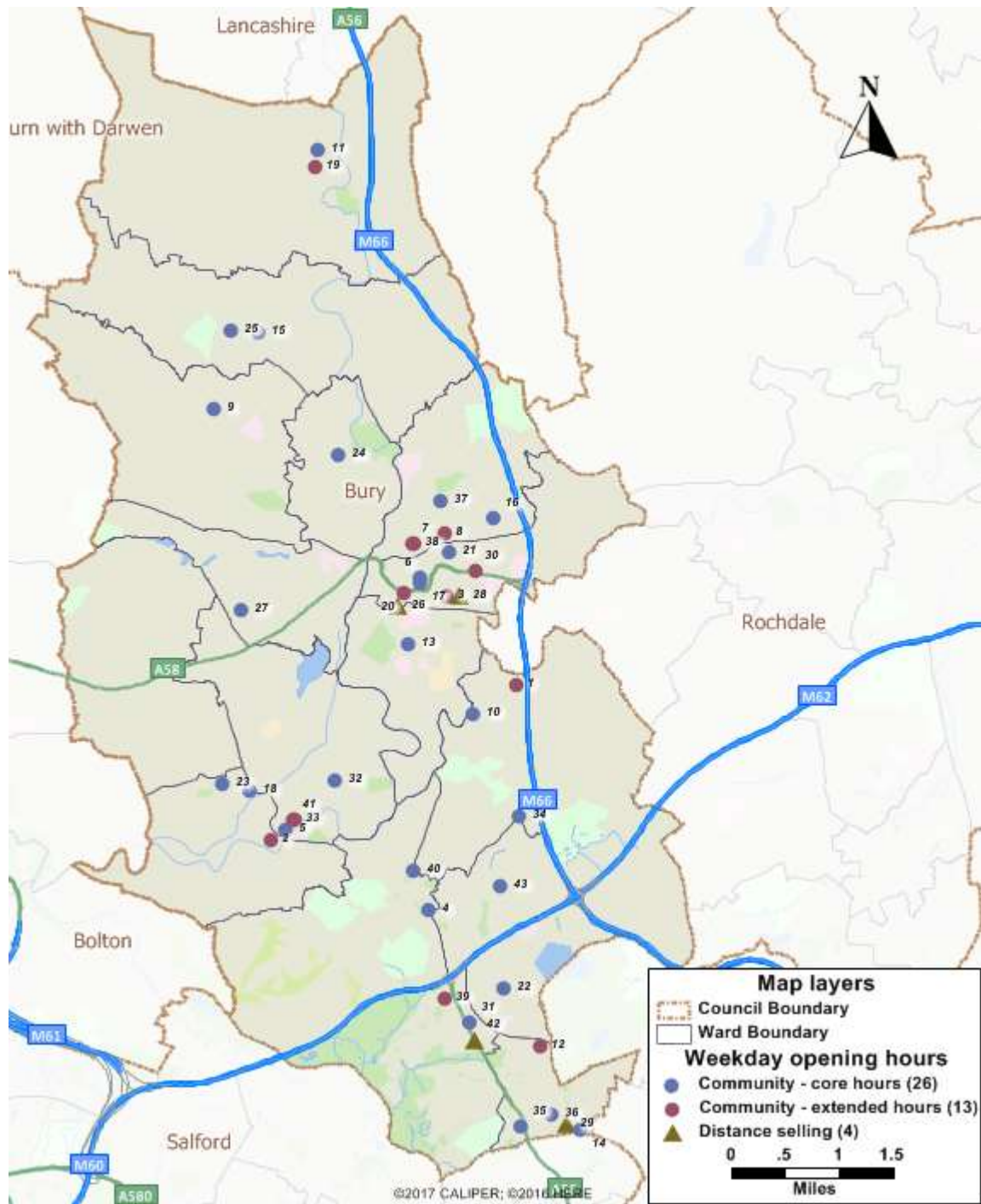


Map 7 - Bury Pharmacies showing 1 mile travel distance

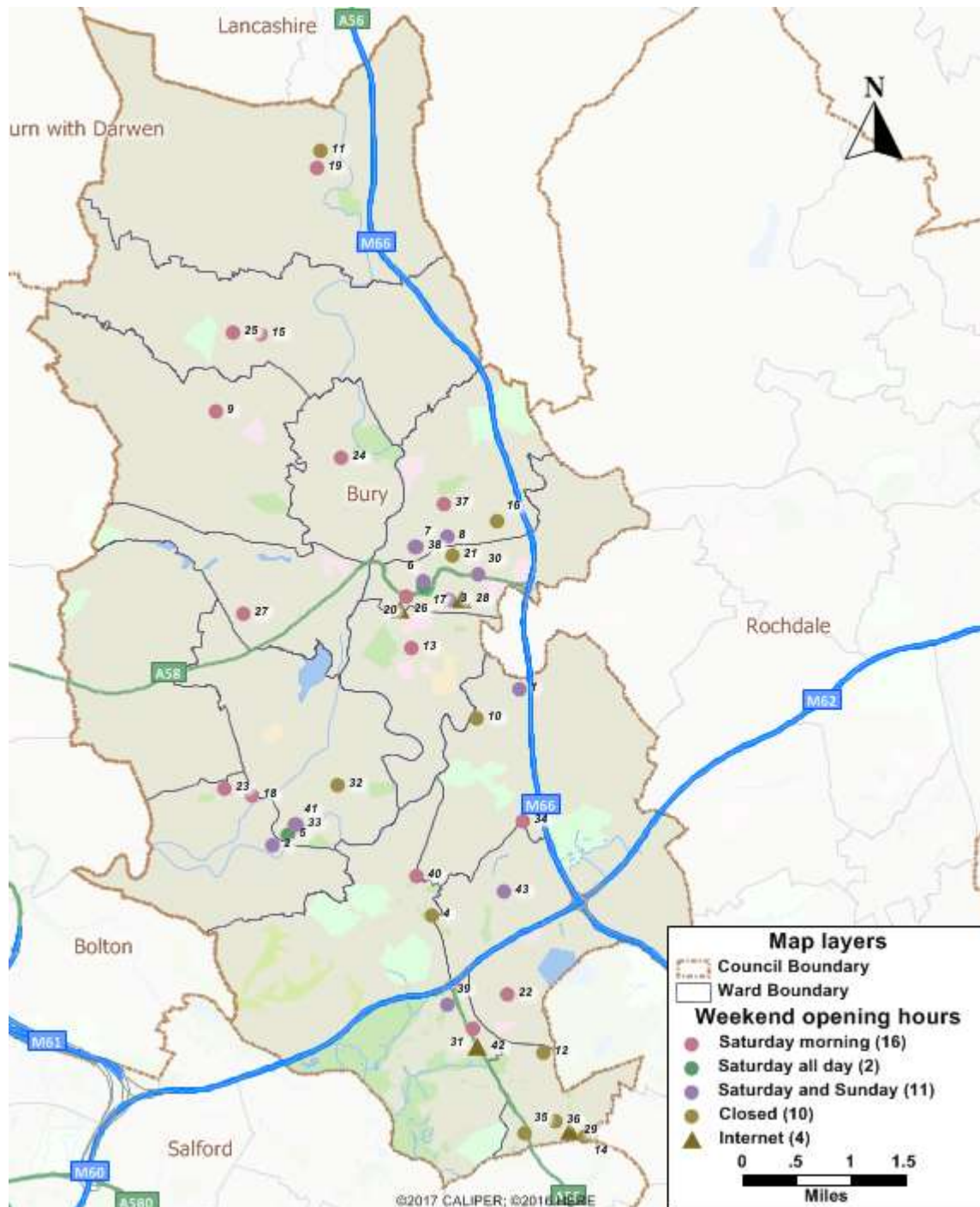




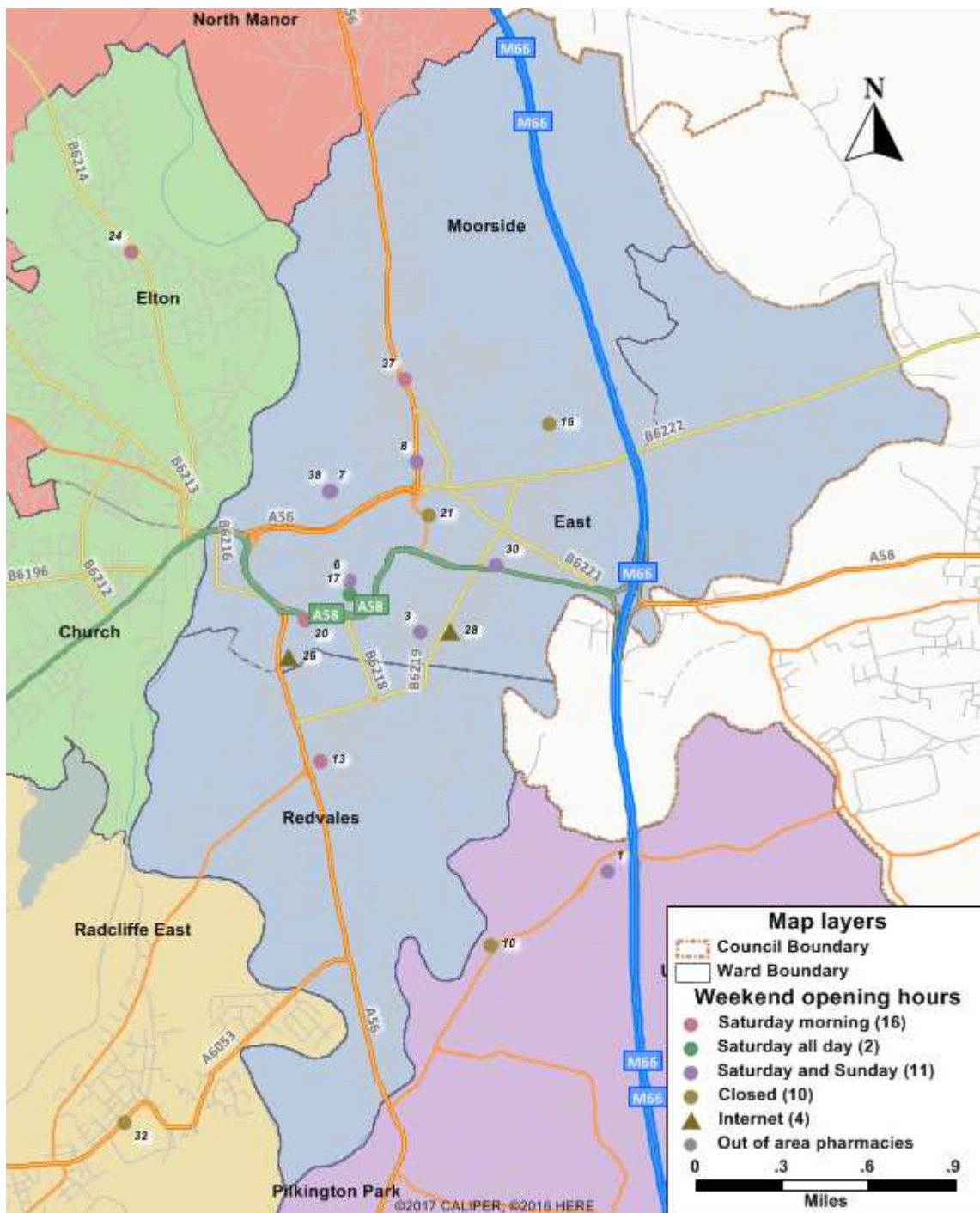
**Map 8 - Bury weekday opening hours  
(Showing core and extended hours)**



**Map 9 - Bury weekend opening hours**  
 (Showing Sat a.m. only, all day Saturday and both Saturday and Sunday)

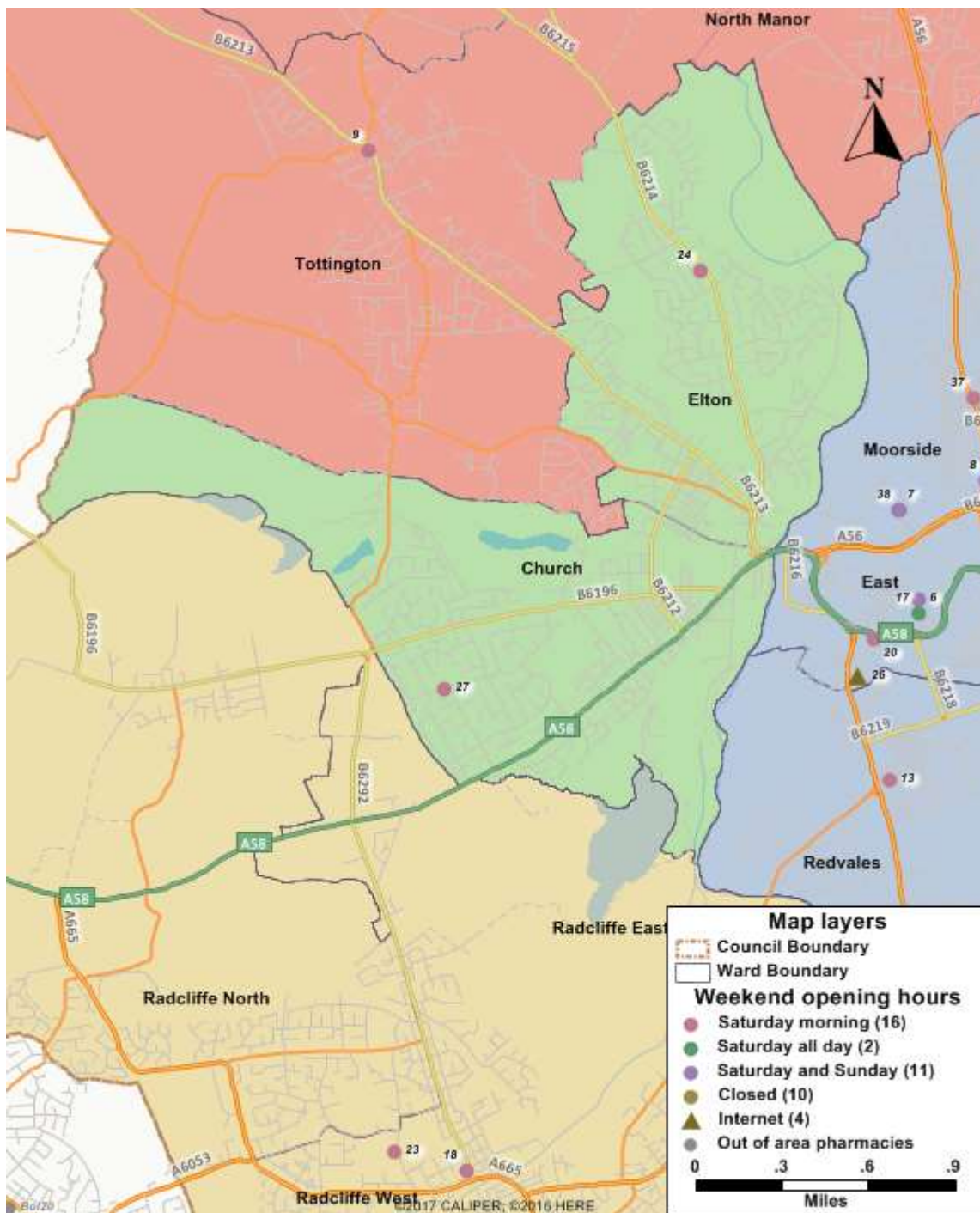


Map 10 - Weekend provision in Bury East Township



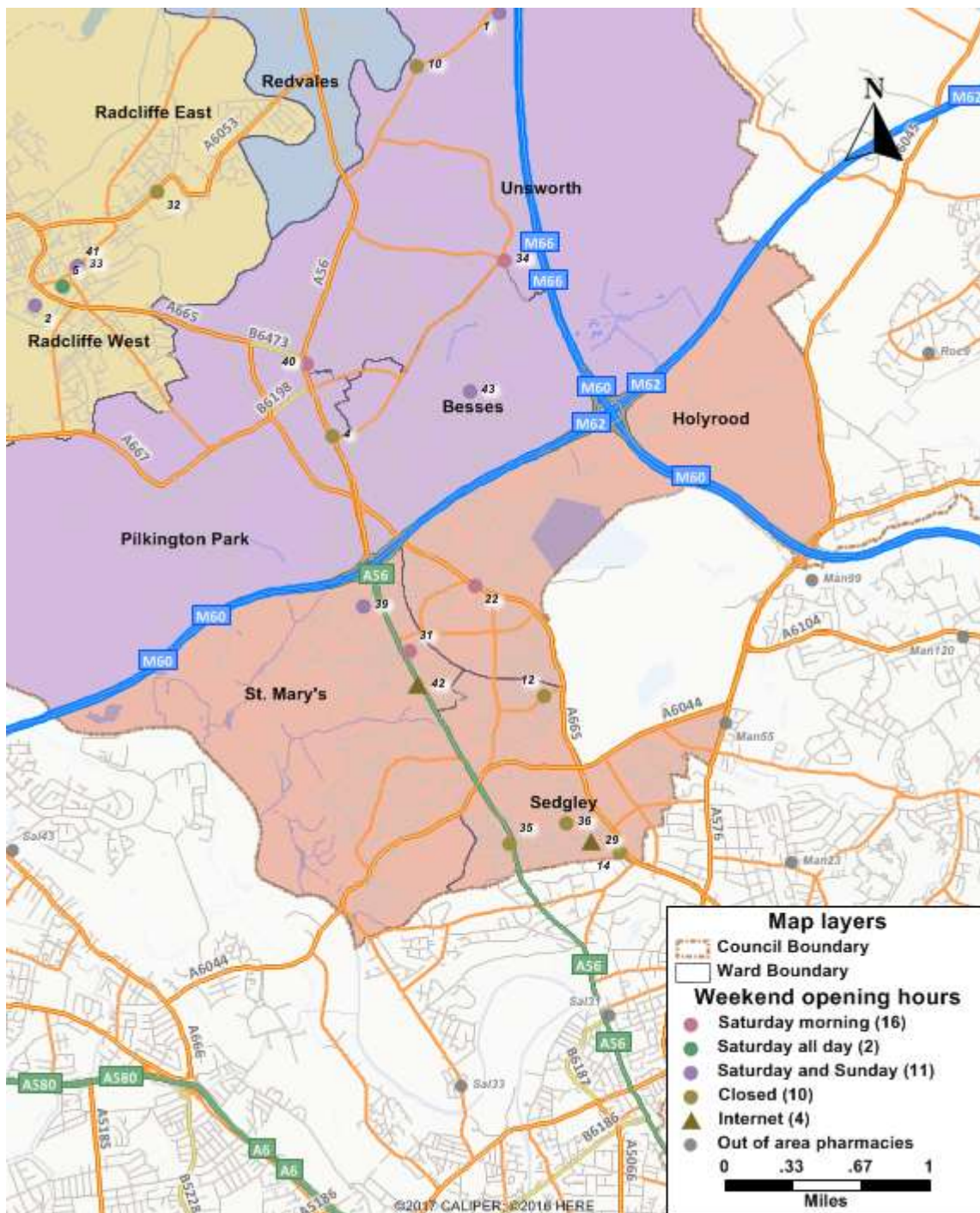


Map 11 - Weekend provision Bury West Township

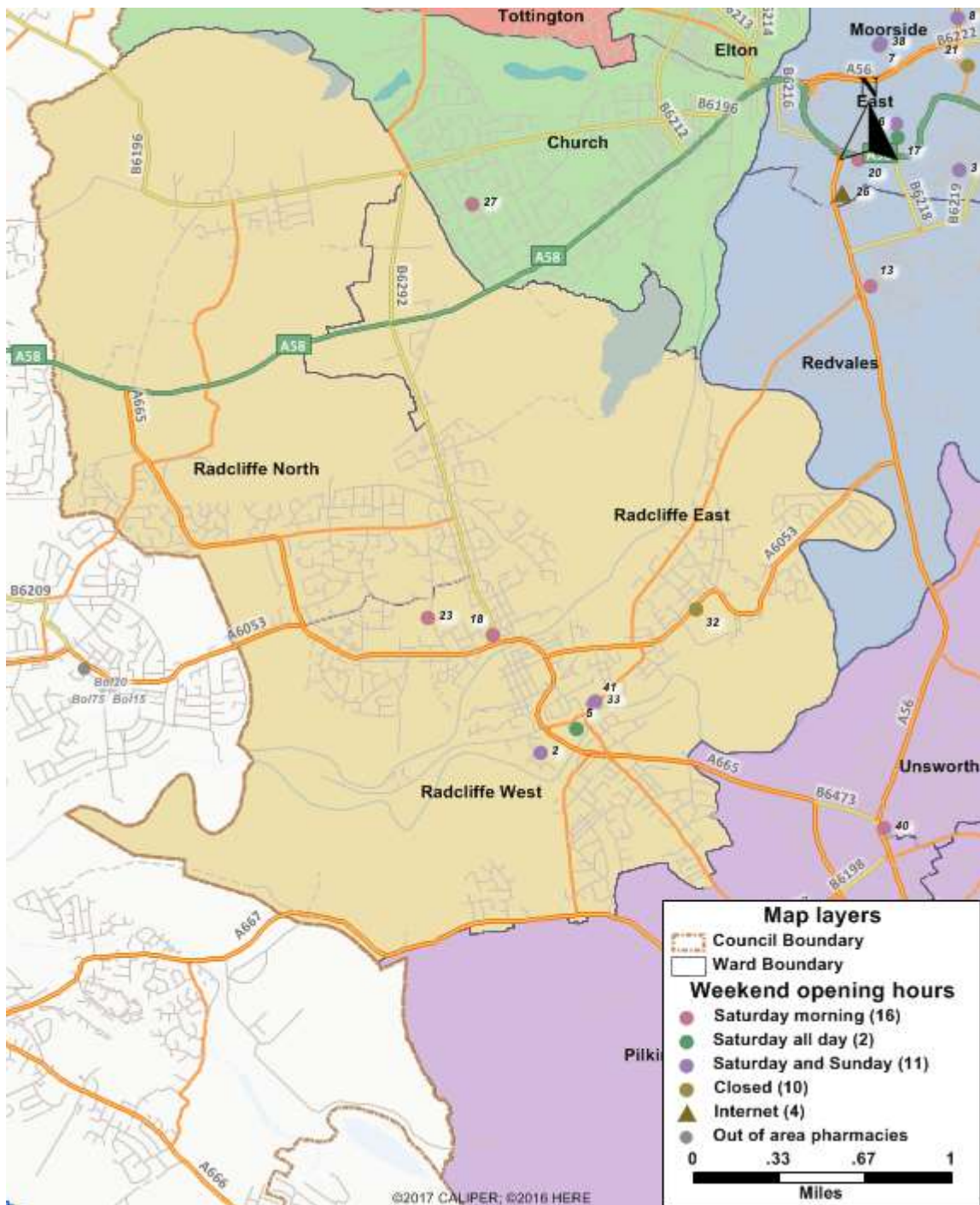




Map 12 - Weekend provision Prestwich Township

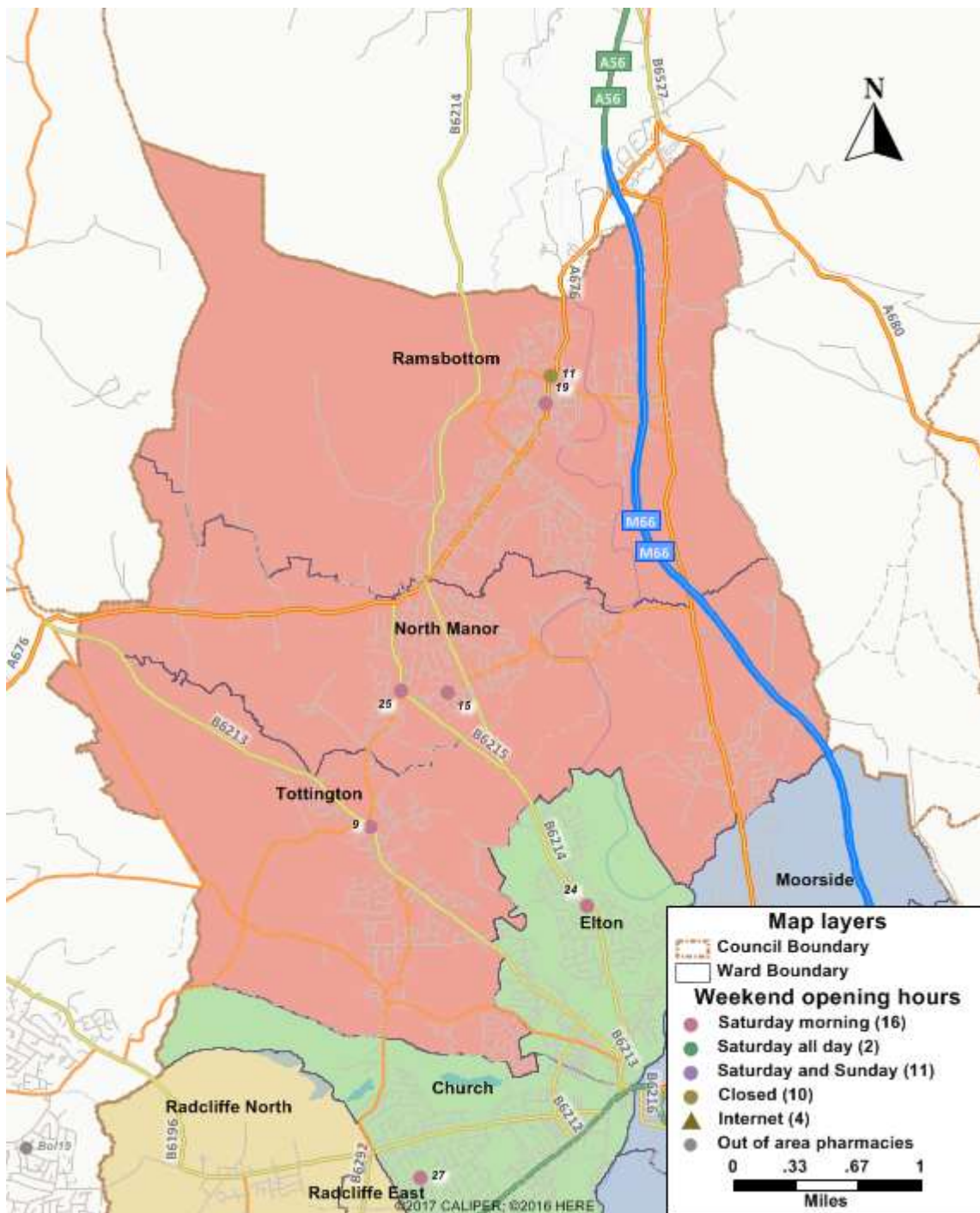


Map 13 - Weekend provision Radcliffe Township





Map 14 - Weekend provision Ramsbottom, Tottington & North Manor Township



Map 15 - Weekend provision Whitefield & Unsworth Township

